

# Aluminium Free Floating Quadrail System

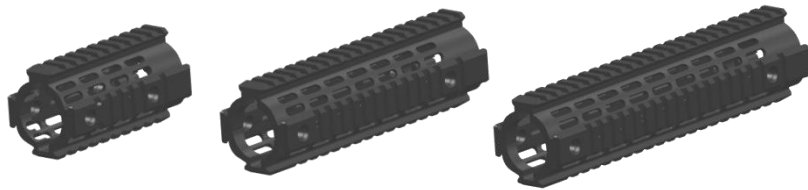
Thank you for your purchase,

light weight professional 2 piece free floating barrel quadrail set

Precision machined out of aircraft grade extruded aluminum, Mil-Std Hard Anodize finish, perfectly tight fit, ultra slim cross section, with continuous 12 O'clock rail and laser T-marked 1913 picatinny rails at 3, 6 & 9 O'clock and 5 QD sling swivel ports,

The ultimately professional choice for tactical, hunting and sport shooting.

- a) Made of Aircraft grade extruded aluminium
- b) Mil-Std Hard anodize finish
- c) Continuous upper rail
- d) 5 QD sling mount ports
- e) Ultra slim - Only 2.22" wide



## Installation instructions\*

### Firearm preparations:

1. Safety first – Clear chamber
2. Remove old handguard from your firearm.
3. The rail system is assembled onto a standard barrel nut, if a Delta ring and a handgurd cap are assembled on the gun they need to be removed:
  - a. Remove muzzle device
  - b. Punch gas block dowel pins out to release gas block
  - c. Slide gas block along with the gas tube off of barrel and remove handguard cap.
  - d. Release the barrel nut with an armorer's wrench
  - e. Remove the barrel assembly from the gun
  - f. Release the delta ring retaining ring and remove it along with the welded spring and delta ring.
  - g. Re-assemble the cleared barrel assembly, make sure that nut serrations are indexed correct. Recommended barrel nut torque: 30 to 80 ft. Lbs max.
  - h. Re-assemble gas block and press in dowel pins. Use washer to compensate for cap thickness if needed.
  - i. Re-assemble muzzle device, recommended torque: 25 to 30 ft. Lbs

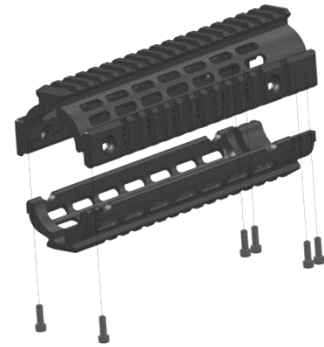


**\*Installation is recommended to be done by a professional gunsmith**

**\*\*warning – do not use sharp tools, it may damage the parts and finish.**

## Quadrail installation:

1. Release all #6-32 hex socket cap screws to separate the 2 clips.



2. Place both clips on barrel nut, upper clip first, Make sure that the index pins are seated right into barrel nut and that the rail is straightened and continuous with receiver. Re-calibrate nut if needed.



3. Close all screws to light pressure



4. Fasten the 4 rear screws (closest to receiver) at a stagger until the rail is tight in place. Fasten front screws last.

